

A NEIGHBORHOOD GENEALOGY OF YOUR OWN

Creating your own Washington, DC
neighborhood genealogy

By M Marie Maxwell

This project was made possible by a grant from The Humanities Council of Washington, DC

How to create a neighborhood genealogy like TruxtonCircle.org

Find Your Square

How do I do a screen capture o... x Find Your Square x +

www.truxtoncircle.org/find-your-square.html

Most Visited Getting Started Latest Headlines Google Reader (...)

510E- 400 blk Q, 1500 blk New Jersey Ave and 4th St

519- 300 blk Boundary/Florida & R St, 1700 blk 4th & 3rd Sts.

520- 300 blk R & Q Sts, 1600 blk 3rd & 4th Sts.

521- 300 blk Q & P Sts, 1500 blk 3rd & 4th Sts.

550- 200 blk Boundary/ Florida & R St, 1700 blk 3rd St.

551- 100 blk Boundary/Florida, 200 blk R St., 100-200 blks of Q St, 1600 blk 1st & 3rd Sts.

552- 100-200 blks Q & Bates & P Sts, 1600 blk 1st & 3rd Sts.

553- 100-200 blks P & O Sts

553W- 300 blk P & O Sts, 1400 blk New Jersey Ave & 3rd St.

554- 100-200 blks O & N Sts, 1300 blk New Jersey Ave & 1st St.

555- Kirby/ 2nd Sts, Morgan, 100-200 blks of N & M Sts & New York Ave, 1200 blk New Jersey Ave & 1st St.

614- Unit blk Boundary/ Florida Ave & Q St., 1600 blk 1st St.

615- Unit blk Boundary/ Florida & Q & Bates & P Sts., 1500 blk 1st & North Capitol Sts.

Determine your geographic boundaries

Start with where you believe your neighborhood's boundaries are now. If that is too large, pick a few blocks of interest.

Neighborhood boundaries change over time. If your neighborhood is in the old city boundaries, to stay consistent, keep the same city squares.

Within those boundaries you may notice great or slight changes with landmarks, streets, alleys and buildings coming, going or changing.



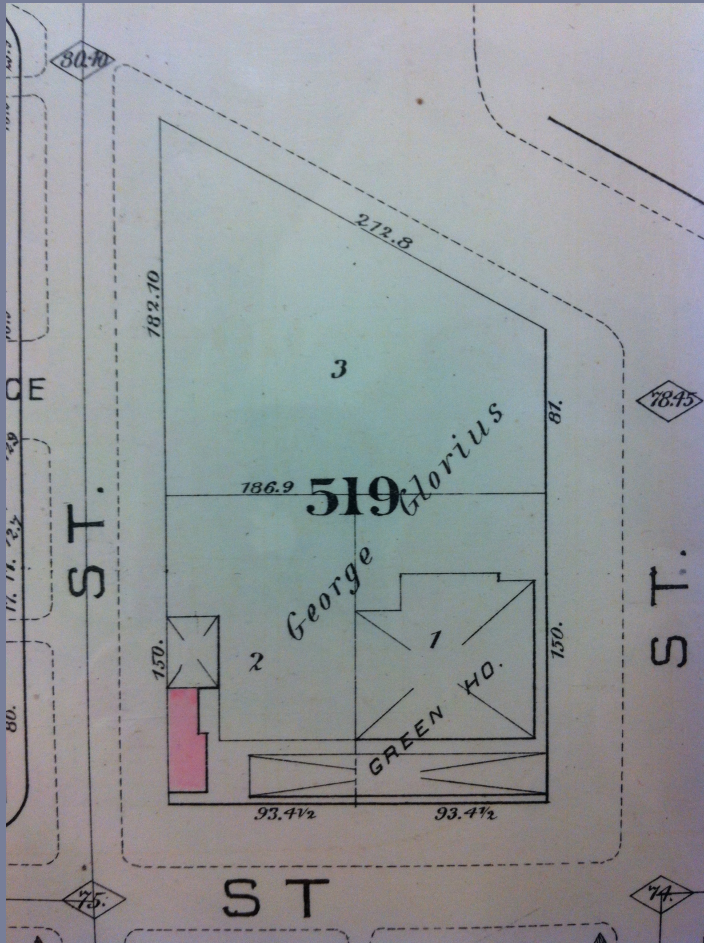
Maps

- Start with the 1887 Hopkins Map in the Washingtonia Room at the Martin Luther King Library.
- Look for your neighborhood in the front index.
- Ask a librarian for help.



View of maps in the Washingtonia room.

Look at Baist and Hopkins Maps to see changes over time



Baist 1887

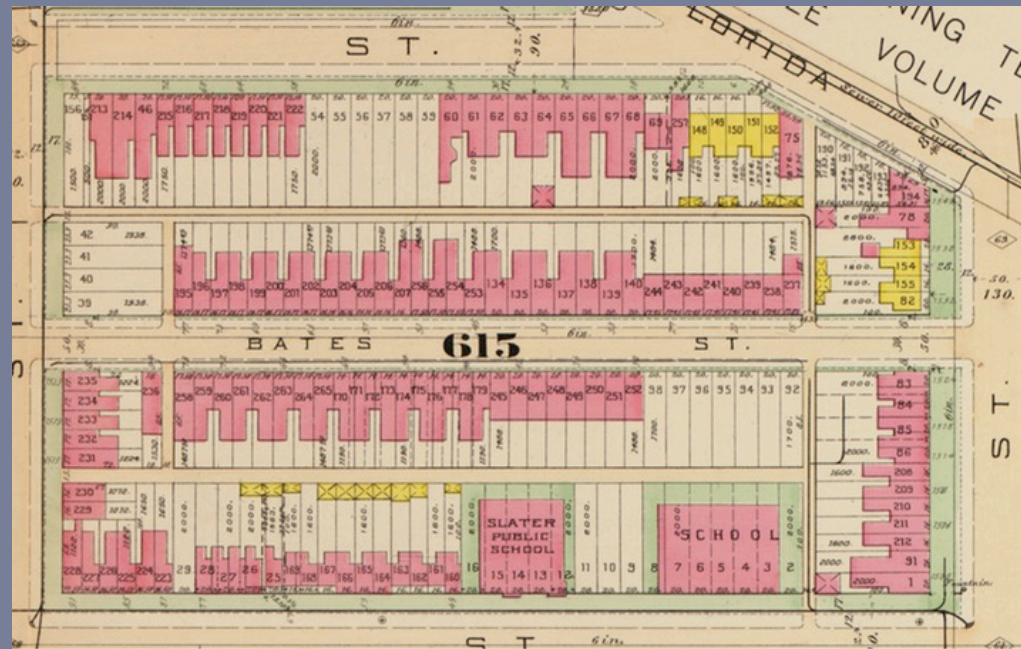


Hopkins

Other Map Resources

Library of Congress- Geography Reading Room and On-Line- <http://www.loc.gov>

The Library of Congress has maps on line. When you visit the Library of Congress in person you will also have access to Sanborn Fire Maps in electronic form.



Historic Map Works- <http://www.historicmapworks.com/>

Once you have looked at the maps and determined your boundaries, you can tell which years with the US Census you need. If there were buildings and residences in 1887 in your study area, start with the 1880 census. If not, then begin with 1900.

Finding Census Information

- Find what enumeration districts (“ED”) apply to your study area for that census. EDs change with each census.
- Find EDs with Stephen Morse’s ED finder, using streets. See <http://stevemorse.org/census/index.html>
- OR use census maps at the National Archives

Finding a census

Once you have the EDs, you can then look at census rolls.

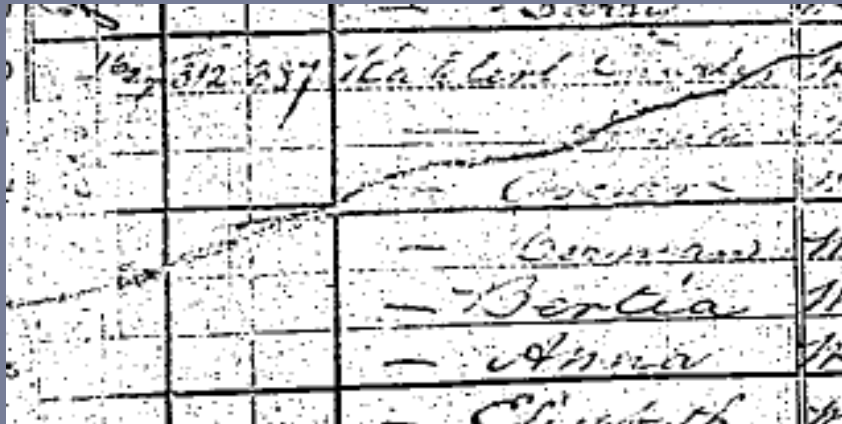
- Find census microfilm at the National Archives, the Washingtonia room at the MLK Library, and many area research libraries.
- Find the census on-line at genealogy websites, like Ancestry.com and HeritageQuest.

Challenges

Difficult to read

Names and numbers can be hard to read. Look for the best and clearest copy.

Sometimes city directories can help fill in the block.



Directories

Find city directories on Ancestry.com or at the National Archives library.



Ancestry.Com has indexed much of the census and it can be used as a resource in capturing information or helping with determining what unclear words are.

25																				
26			Son	NH	22	28	24	1861	2	South Carolina	Gen. German	Gen. German	English	None						
27			Daughter-in-law		24	28	24	1861	2	Mississippi	Mississippi	Mississippi	English	None						
28			Nephew		11	18	1863	3	South Carolina	Gen. German	Gen. German	English	None							
29			Nephew		11	18	1863	3	South Carolina	Gen. German	Gen. German	English	None							
30			Nephew		11	18	1863	3	South Carolina	Gen. German	Gen. German	English	None							

Family Index

	Family Number	Surname	Given Name	Relationship	Gender	Race	Age	Estimated Birth Year
Update	1	Gerchickter	Leo	Head	Male	White	47	1863
	1	Gerchickter	Rose Z	Wife	Female	White	41	1869
	1	Gerchickter	Janette	Daughter	Female	White	19	1891

Collect the data and share it

- Data collected from census can be placed in spreadsheets.
- Maps can be photographed or copied from on-line sources.
- Free blog websites like Blogspot or Wordpress can help share images and words about what you've found.
- Free file sharing websites like Google Docs can let you share spreadsheets and jpeg files.

The End

If you need more guidance regarding doing a DC or urban neighborhood genealogy like TruxtonCircle.org please contact M Marie Maxwell at [mari @ inshaw.com](mailto:mari@inshaw.com).